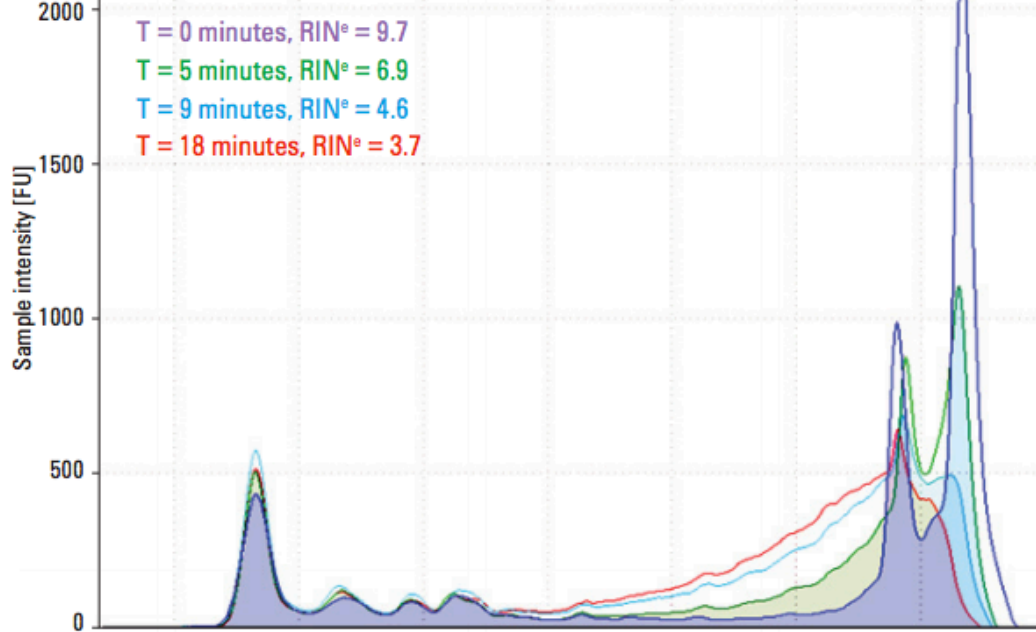
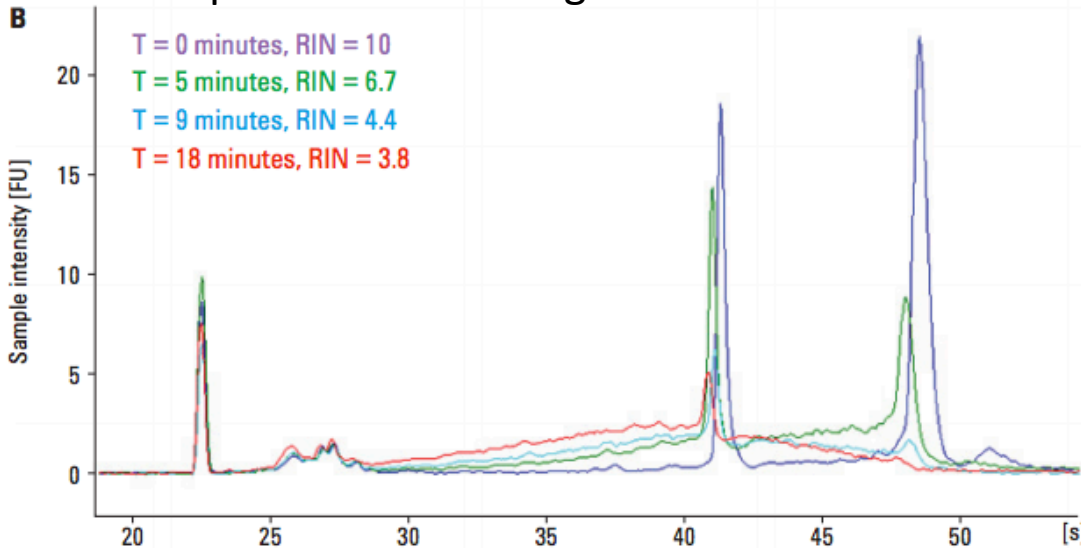


A

Comparison of heat degraded RNA



Comparison of heat degraded RNA



TAPESTATION

RIN^e “represents the relative ratio of the signal in the fast zone to the 18S”

– Agilent.com

BIOANALYZER

RIN is calculated from a “proprietary neural network trained algorithm to make an assessment of the entire electrophoretic trace for a given total RNA sample, including ribosomal peak ratios, separation, and the presence or absence of degradation products”

– Agilent.com